

# UE8040-ES10

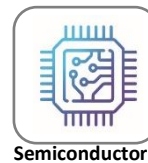
PES UF element for fractionation process



- MWCO 10,000 Da



Food



Semiconductor



Industrial

## SPECIFICATIONS

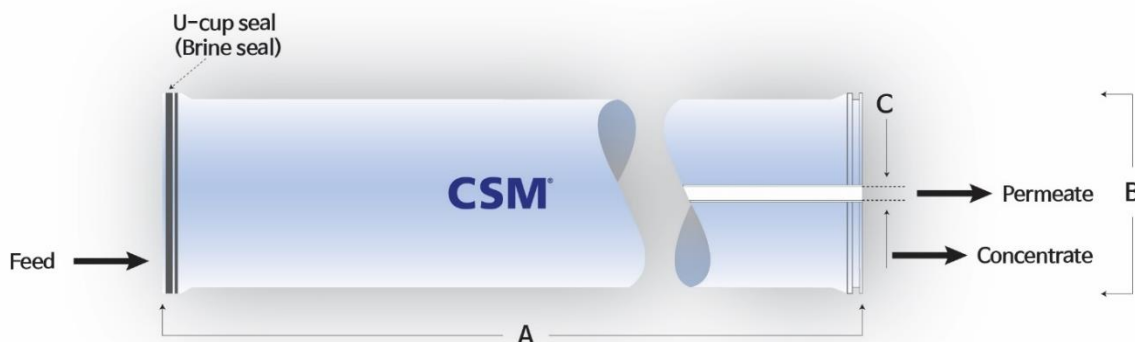
### General Features

<b>Permeate Flow Rate</b>	8,000 GPD (30.3 m <sup>3</sup> /day)
<b>Molecular Weight Cut Off</b>	10,000 (Daltons)
<b>Effective Membrane Area</b>	400 ft <sup>2</sup> (37.2 m <sup>2</sup> )
<b>Membrane Type</b>	Thin-Film Composite
<b>Membrane Material</b>	Polyethersulfone (PES)
<b>Element Configuration</b>	Spiral-Wound, FRP Wrapping

**Test Conditions:** pure water at 20 psig (0.14 MPa) applied pressure; 77°F(25°C); pH 6.5–7.0; Permeate flow rate for each element may vary +25 / -25%.

### Dimensions and Weight

Model Name	A	B	C	Weight	Part Number	
					Inter-Connector	Brine Seal
UE8040-ES10	40.0 inch (1,016 mm)	7.9 inch (200 mm)	1.125 inch (28.6 mm)	15kg	SWA01049	SWA01043



1. Each membrane element supplied with one interconnector (coupler) and four O-rings.
2. All UE8040 elements fit nominal 8.0 inch (203.2 mm) I.D. pressure vessels.

**Toray Advanced Materials Korea Inc.**

For more information on our products, company and regional contacts, please visit our website at [www.csmfilter.com](http://www.csmfilter.com).  
Product Specification Sheet / Model UE8040-ES10

V.2.4 (23)

# UE8040-ES10

PES UF element for fractionation process

# CSM<sup>®</sup>

## APPLICATION DATA

### Operating Limits

<b>Max. Pressure Drop / Element</b>	15 psi (0.10 MPa)
<b>Max. Pressure Drop / 240" Vessel</b>	60 psi (0.41 MPa)
<b>Max. Operating Pressure</b>	600 psi (4.14 MPa)
<b>Max. Feed Flow Rate</b>	75 gpm (17.0 m <sup>3</sup> /hr)
<b>Min. Concentrate Flow Rate</b>	16 gpm (3.6 m <sup>3</sup> /hr)
<b>Max. Operating Temperature</b>	113°F (45°C)
<b>Operating pH Range</b>	2.0 – 11.0
<b>CIP pH Range</b>	1.0 – 13.0
<b>Max. Turbidity</b>	1.0 NTU
<b>Max. SDI (15 min)</b>	5.0

## GENERAL HANDLING PROCEDURES

- Elements contained in the boxes must be kept dry at room temperature (7–32°C; 40–95°F) and should not be stored in direct sunlight.
- For WET-TYPE, the preservative solution (1% sodium metabisulfite solution) is added to prohibit the growth of micro-organisms.
- Permeate from the first hour of operation should be discarded.
- Salt rejection would be stabilized within 48 hours of continuous operation depending on feedwater and operating conditions, but may take over a week for dry elements.
- Keep elements moist at all times after initial wetting.
- Avoid excessive pressure and flow spikes.
- Only use chemicals compatible with the membrane elements and components. Use of such chemicals may void the element limited warranty.
- Permeate pressure must always be equal or less than the feed/concentrate pressure. Damage caused by permeate back pressure voids the element limited warranty.
- The element shell is FRP(Fiber Reinforced Plastic). Be aware of glass fiber strands and use safety equipment.

### Toray Advanced Materials Korea Inc.

For more information on our products, company and regional contacts, please visit our website at [www.csmfilter.com](http://www.csmfilter.com).  
Product Specification Sheet / Model UE8040-ES10

V.2.4 (23)

# UE8040-PF

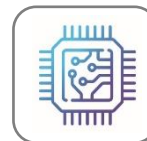
Normal grade UF element for RO pretreatment

# CSM<sup>®</sup>

- High Permeate Flux
- MWCO 50K - 100K Da



Food



Semiconductor



Industrial

## SPECIFICATIONS

### General Features

<b>Permeate Flow Rate</b>	16,000 GPD (60.6 m <sup>3</sup> /day)
<b>Molecular Weight Cut Off</b>	50K – 100K (Daltons)
<b>Effective Membrane Area</b>	400 ft <sup>2</sup> (37.2 m <sup>2</sup> )
<b>Membrane Type</b>	Thin-Film Composite
<b>Membrane Material</b>	Polysulfone (PSF)
<b>Element Configuration</b>	Spiral-Wound, FRP Wrapping

**Test Conditions:** pure water at 20 psig (0.14 MPa) applied pressure; 77°F (25°C); pH 6.5–7.0; Permeate flow rate for each element may vary +25 / -25%.

### Dimensions and Weight

Model Name	A	B	C	Weight	Part Number	
					Inter-Connector	Brine Seal
UE8040-PF	40.0 inch (1,016 mm)	7.9 inch (200 mm)	1.125 inch (28.6 mm)	15kg	SWA01049	SWA01043



1. Each membrane element supplied with one interconnector (coupler) and four O-rings.
2. All UE8040 elements fit nominal 8.0 inch (203.2 mm) I.D. pressure vessels.

**Toray Advanced Materials Korea Inc.**

For more information on our products, company and regional contacts, please visit our website at [www.csmfilter.com](http://www.csmfilter.com).  
Product Specification Sheet / Model UE8040-PF

V.2.4 (23)

# UE8040-PF

Normal grade UF element for RO pretreatment

# CSM<sup>®</sup>

## APPLICATION DATA

### Operating Limits

---

<b>Max. Pressure Drop / Element</b>	15 psi (0.10 MPa)
<b>Max. Pressure Drop / 240" Vessel</b>	60 psi (0.41 MPa)
<b>Max. Operating Pressure</b>	600 psi (4.14 MPa)
<b>Max. Feed Flow Rate</b>	75 gpm (17.0 m <sup>3</sup> /hr)
<b>Min. Concentrate Flow Rate</b>	16 gpm (3.6 m <sup>3</sup> /hr)
<b>Max. Operating Temperature</b>	113°F (45°C)
<b>Operating pH Range</b>	2.0 – 11.0
<b>CIP pH Range</b>	1.0 – 13.0
<b>Max. Turbidity</b>	1.0 NTU
<b>Max. SDI (15 min)</b>	5.0

---

## GENERAL HANDLING PROCEDURES

- Elements contained in the boxes must be kept dry at room temperature (7–32°C; 40–95°F) and should not be stored in direct sunlight.
- For WET-TYPE, the preservative solution (1% sodium metabisulfite solution) is added to prohibit the growth of micro-organisms.
- Permeate from the first hour of operation should be discarded.
- Salt rejection would be stabilized within 48 hours of continuous operation depending on feedwater and operating conditions, but may take over a week for dry elements.
- Keep elements moist at all times after initial wetting.
- Avoid excessive pressure and flow spikes.
- Only use chemicals compatible with the membrane elements and components. Use of such chemicals may void the element limited warranty.
- Permeate pressure must always be equal or less than the feed/concentrate pressure. Damage caused by permeate back pressure voids the element limited warranty.
- The element shell is FRP(Fiber Reinforced Plastic). Be aware of glass fiber strands and use safety equipment.

---

**Toray Advanced Materials Korea Inc.**

For more information on our products, company and regional contacts, please visit our website at [www.csmfilter.com](http://www.csmfilter.com).  
Product Specification Sheet / Model UE8040-PF

V.2.4 (23)