

# SFlux<sup>®</sup> Automatic Filter Jug



## ◆ Intelligent control panel

High flux > 500ml/min  
Automatic stop protection after purified water  
Filter replacement, low battery indicator light

## ◆ High performance filter

Bacteria 99.9999%, virus 99.9%  
Chlorine 99%, VOC 90%  
Heavy metal Lead, Mercury, Arsenic 99.9%

## ◆ Multifunction usage

Rechargeable battery, sustainable use 30mins  
Connect water source, continuously flow out  
Portable outdoor use

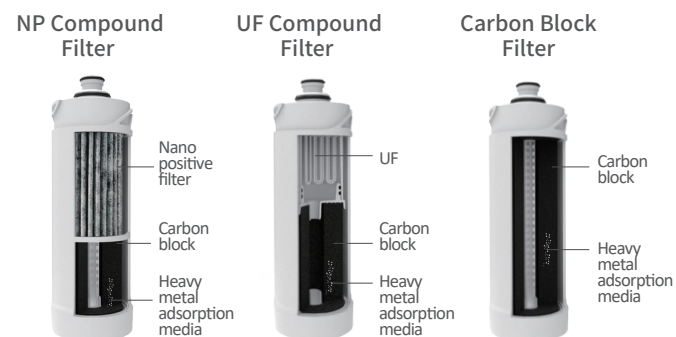
## ◆ Global patented technology

ZL 2021 2 2025004.3  
ZL 2022 2 1689313.9

## Specification

Flux: 500ml/min, Life time: 500L(400 times), Material: AS.ABS.PP  
Total capacity: 2.7L (raw water: 1.2L, purified water 1.5L)  
Packing size: H33 x L25 x W13.8 cm, Voltage: 3.7V/5V 2A

## Filter option:



NP Compound bacteria,virus,chlorine , VOC, heavy metal

UF Compound bacteria,chlorine , VOC, heavy metal

Carbon Block chlorine , VOC, heavy metal

## Portable RO Filter Jug



## Product Performance

Heavy metal > 99.9%  
Bacteria,virus > 99.9999%  
VOC > 99.9%  
Chlorine > 99%

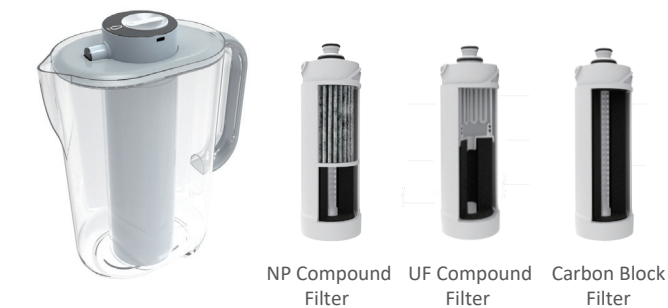
Free installation

Mini -RO type

Emergency use

Patent technology

## Outdoor Filter Jug



## Product Performance

Virus > 99.9%  
Bacteria > 99.9999%  
Heavy metal > 99.9%  
Chlorine > 99%

Portable type

Household&outdoor

Multifunction

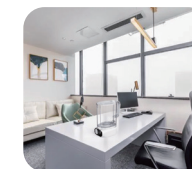
Energy saving

## Test result:

Test item(s)	Unit(s)	Test method(s)	Test result(s)			Removal rate(s) (%)	
			Effluent filtrated water Unit 1	Effluent filtrated water Unit 2	Influent spiked water	Unit 1	Unit 2
Escherichia coli	cfu/100mL	GB/T 5750.12 - 2006	<1	<1	$7.2 \times 10^{-7}$	>99.9999	>99.9999

## Application:

Portable automatic water pitcher for office, kitchen, living room, tourism, exploration, and outdoor use



## CJK Co.,Ltd

Address: 239-5, JUSEOK-RO, NAMYANG-EUP, HWASEONG-SI, GYEONGGI-DO, 18255, KOREA

Tel: +82-31-355-8440 E-mail : bean@cjkw.co.kr

Homepage : <https://www.cjkw.co.kr/>

# CJK



LOW PRICE & HIGH PERFORMANCE  
DRINKING WATER FILTER SOLUTION

## Bottle top dispenser Purifier



### Filtration stage

- 1st Carbon fiber
  - : remove chlorine, chemical pollution
  - improve taste of water
- 2nd Absorbent media (option)
  - : remove heavy metal
- 3rd Hollow fiber UF
  - : pore size 0.1um, reject Ecoli bacteria 99.9999%
- \* Nano positive membrane (option)
  - : reject noro virus 99.9%

### Characteristic

Bottle top dispenser and portable use also  
Small size and multi purification function  
Low cost than bottle water

### Application

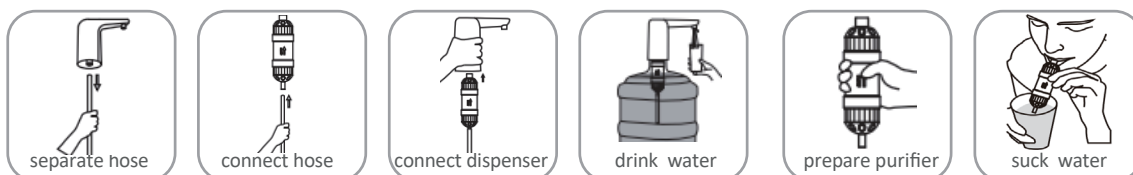
Use in office, household kitchen, living room  
and also portable water purifier for travel,  
exploration, outdoors

### Specification

- \*Filter life time : 500 liter
- \*Filter size : L 13 x W 4 cm
- \*Material : ABS, PS, Carbon fiber
- \*Flux : > 0.8 liter / min
- \*Packing size : H 21 x L11 x W 4 cm
- \*MOQ : 2000 sets

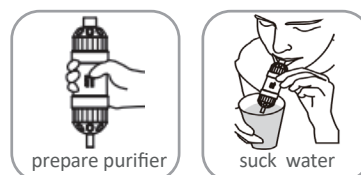
### How to use 1

bottle top dispenser



### How to use 2

portable outdoor purifier



## Water bag Purifier

\*PATENT NO.ZL2017 2 0219207.7

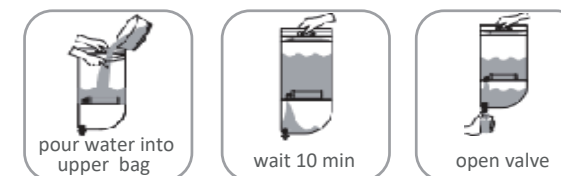
### Filtration stage

- 1st Carbon fiber
  - : remove chlorine, chemical pollution
  - improve taste of water
- 2nd Absorbent media (option) : remove heavy metal
- 3rd Hollow fiber UF
  - : pore size 0.1um, reject bacteria 99.9999% (E coli)
- or Nano positive membrane
  - : reject virus99.9% (noro)

### Characteristic

No electricity, natural pressure  
Easy to use, save space  
Foldable compact design  
Durable and not fragile

### How to use

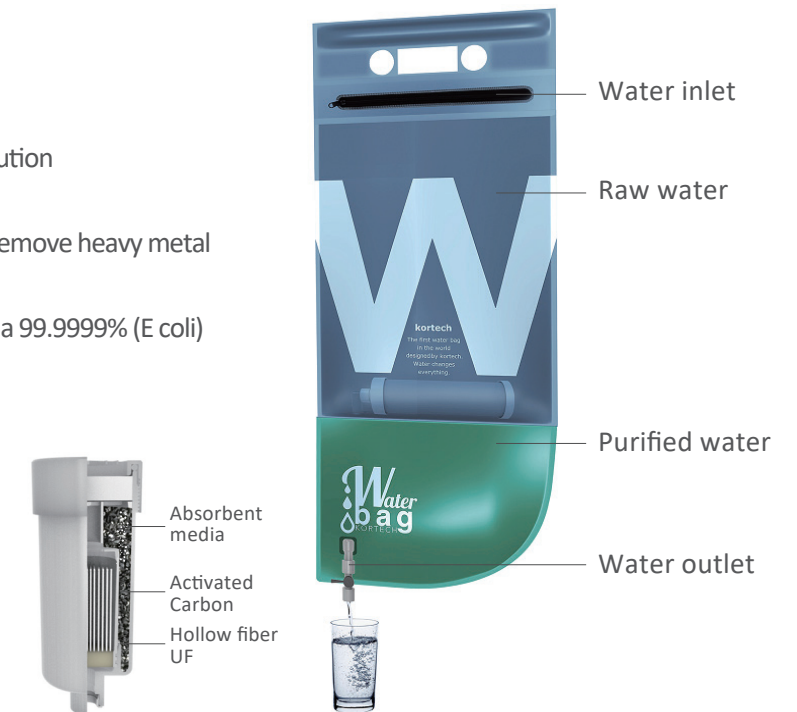


### Application

Use in physical(suspended solid),chemical(COD),biological(bacteria, virus) polluted waters. For emergency situations such as flooding, earthquake and also outdoor areas.



All polluted  
water area



### Specification

- \*Filter life time : 200 liter
- \*Bag size : L 62 x W 28 cm  
(raw water 6 liter, purified water 3 liter)
- \*Material : PVC or TPU
- \*Flux : > 0.7 liter / min
- \*Packing size : H 40 x L 14 x W 7 cm
- \*MOQ : 2000 sets